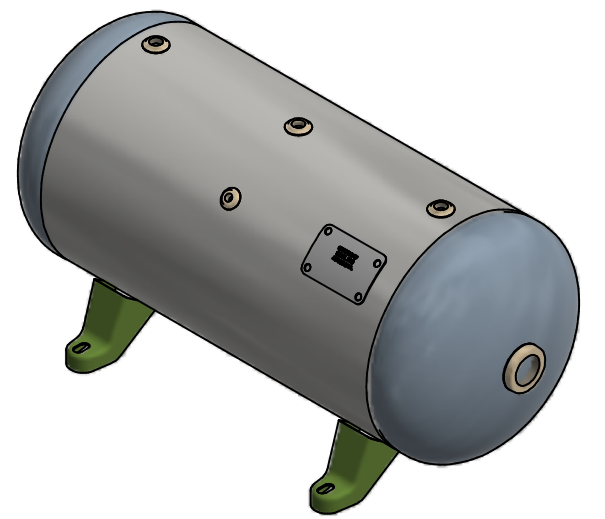
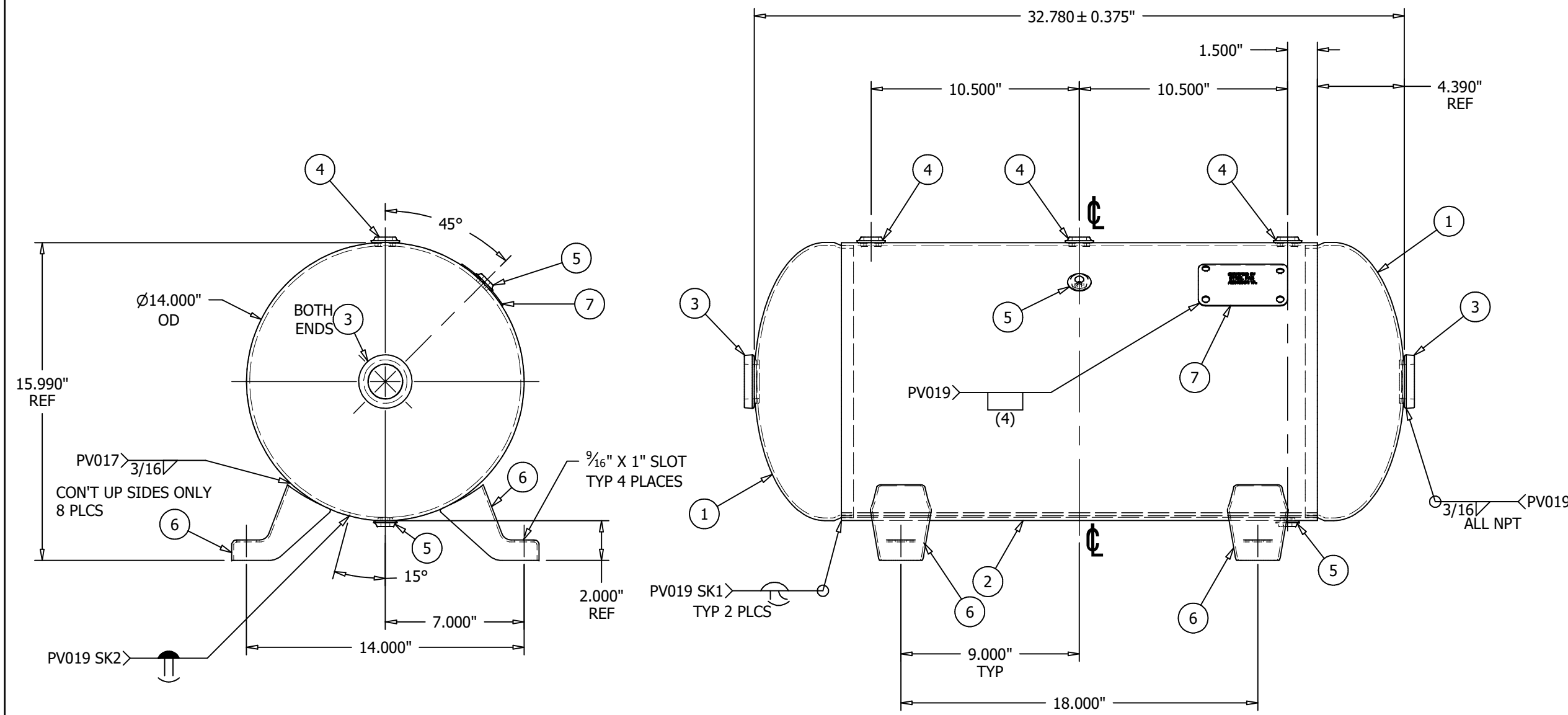


ITEM	P/N	DESCRIPTION	QTY
1	H14132J	HEAD 14.00 OD 0.132 M/0.141 N SA414-G SE 2:1 JOGGLE	2
2	A10025-300-SL	SHELL BURNT 0.154 SA414-G 24.00 X 14.00 OD	1
3	F101500	WELD FLG 1.500 NPT CS SA181-70 FLAT 397 O/R	2
4	F100500	WELD FLG 0.500 NPT CS SA181-70 FLAT 253	3
5	F100250	WELD FLG 0.250 NPT CS SA181-70 FLAT 251	2
6	S101453S	FOOT, H18X W/SLOT A1011CS-B USED ON 14" & 16" TANKS	4
7	A10025-300-NP	NAME PLATE FOR A10025-300 A1011CS-B	1



**SHELL CUT SIZE IS REFERENCE ONLY
 **CPLG & FITTING 0.50 EXT PROJ TYP
 **HEAD THICKNESS SHOWN IS SPECIFIED MINIMUM
 **RADIUS INSIDE PROJECTED EDGES OF NOZZLES 1/8" MIN
 **SEE PAGE 2 FOR FINISH
 **FLANGE BOLT HOLES STRADDLE TANK C/L EXCEPT AS NOTED
 **ALL DIMS IN INCHES UNLESS NOTED OTHERWISE
 **IMPACT TEST EXEMPT PER UG 20(f)
 14" X 33" 300# HORIZONTAL AIR RECEIVER
 NOTES

TRAVELER REQUIRED No IF YES THEN FIXTURE # _____
 FIXTURE REQUIRED No

RELEASED TO PRODUCTION		TOLERANCES ARE PER EN1370 STEEL FAB STANDARD TOLERANCES UNLESS OTHERWISE SPECIFIED		DESIGN & CALCULATIONS COMPLY WITH ASME CODE SECTION VIII, DIV1. LATEST EDITION	
SALES ORDER#		QTY:		SVPG STOCK	
RELEASE DATE:		NAT'L BD: YES			
NB/SERIAL#		STAMP " U "		ENG. APP'L / DATE JE - 1/18/2010	
HEAD THK: .132" MIN C.A.: --- MAT'L SA414-G EFF 85 %		VOLUME: APPROX 20 GAL		QCM. APP'L / DATE JP-1/19/2010	
SHELL THK: .154" NOM C.A.: --- MAT'L SA414-G EFF 70 %		MAMP 300 PSI AT 400 °F		A.I. VERIFICATION / DATE BQ-1/19/2010	
SHIPPING WEIGHT: 68 LBS		MDMT -20 °F AT 300 PSI		SAMUEL PRESSURE VESSEL GROUP	
CRN: 8061.7265		TEST: HYDRO AT 390 PSI			
		TEST: PNEU AT --- PSI		OAKVILLE, ONT	
				LEBANON, VA	
				DRAWN BY: KRG P/N A10025-300	
				DATE: 1/15/2010	
				PAGE 1 OF 2	
				REV. 10	

REV	DATE	DESCRIPTION	ENG	QCM	AI/DATE
3	3/1/12	CHANGED WELD NOTE ON FOOT	BP	JP	BQ 3/2/11
4	7/11/14	HEAD WAS H14114J	AO	JP	BQ7/16/14
5	10/29/14	ADDED FINISH SPEC	AO	JP	N/A
6	7/11/18	REVISED NP POSITION TO NEW STANDARD	MG	BW	BQ 7/24/18
7	10/15/18	UPDATED TO DIVISIONAL WELD PROCEDURES	MG	BW	NA
8	12/7/18	UPDATED CRN	RJM	BW	BQ 5/20/19
9	8/3/21	ADDED JOINT DETAIL SK	MG	N/A	BQ 8/3/21
10	8/4/21	UPDATED CRN	RM	N/A	N/A

