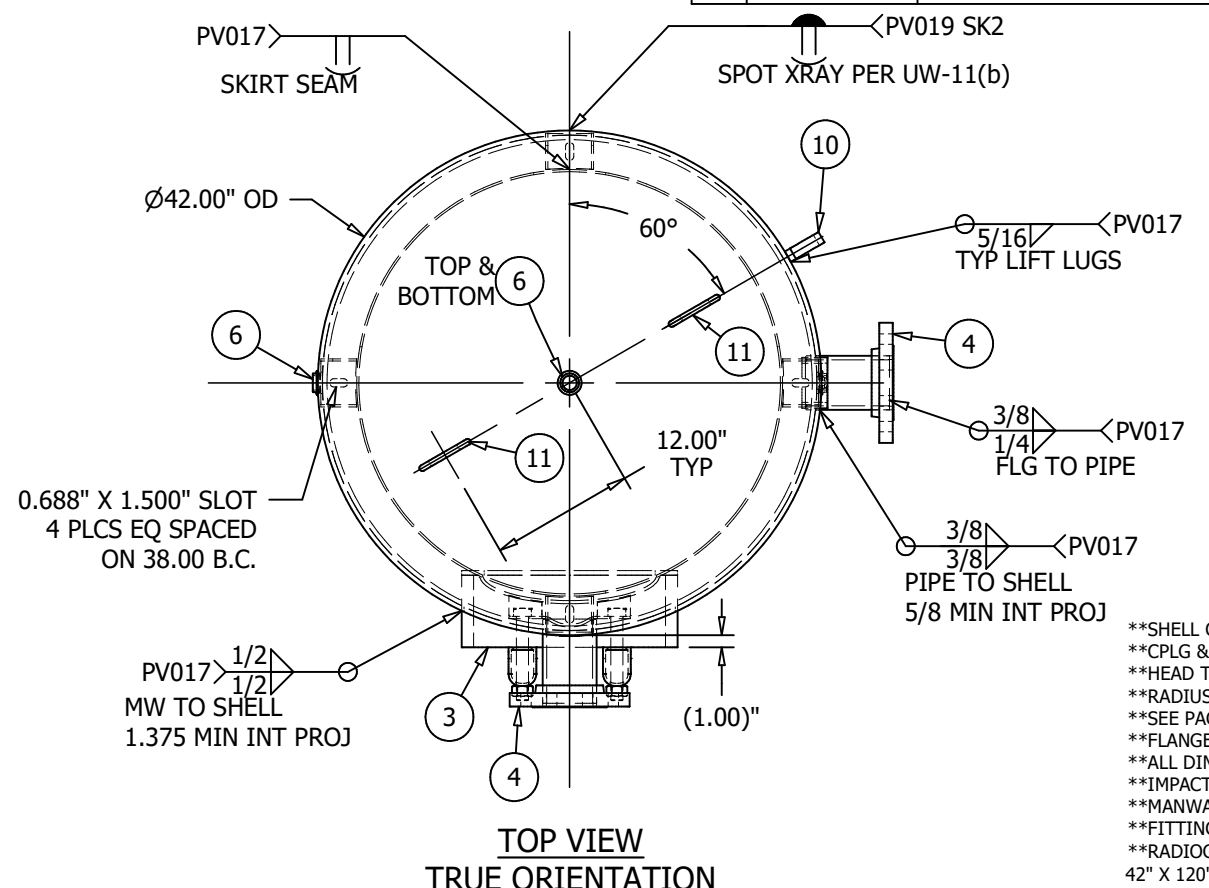
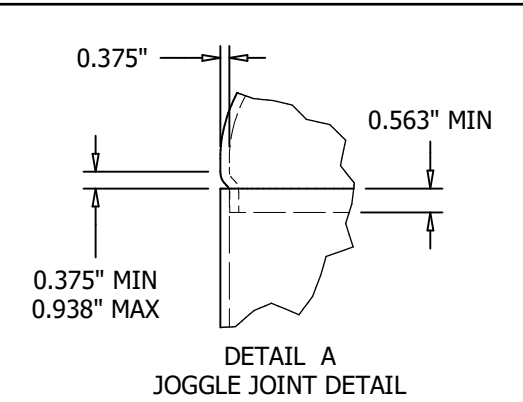


FRONT VIEW
TRUE ELEVATION

CONT UP SIDES
8 PLACES

REV	DATE	DESCRIPTION	ENG	QCM	AI/DATE
9	4/23/20	UPDATED CRN, CORRECTED BOM DESCRIPTIONS	RM	PE	BQ 4/30/20
10	7/29/20	RELOCATED LIFT LUGS ON SHELL & HEAD	MG	N/A	BQ 8/5/20
11	9/2/22	4" RFSO ASY WAS S102949	MG	N/A	BQ 9/7/22



TOP VIEW
TRUE ORIENTATION

ITEM	P/N	DESCRIPTION	QTY
1	H42375J	HEAD, 0.353M/0.375N x 42 OD SA516-70 SE 2:1 JOGGLE	2
2	A10131-300X-SL	SHELL BURNT 0.375 CS SA516-70 95.25 X 42.00 OD	1
3	S100343-21	MANWAY 12.00 X 16.00 X 6.000 X 1.000 RING CS SA106C C/W 300# CLOSURE	1
4	S114910	RFSO ASY 4.000" 300# S80 (0.337" WALL) 7.337 LG SA105 ANSI B16.5/ SA106-B	2
5	F603000H	CPLG 3.000 NPT SA105 ANSI B16.11 3000# HALF	1
6	F101000	WELD FLG 1.000 NPT CS SA181-70 FLAT 255	4
7	F100250	WELD FLG 0.250 NPT CS SA181-70 FLAT 251	1
8	S102114	SKIRT ASY 7GA A1011CS-B X 35.50 OD W/8.000 CLR, 38.50 BC FOR 42 & 48 TANKS	1
8.1	S100066	SKIRT 7GA A1011CS-B 12.000 X 35.50 OD W/8.000 CLR USED ON 42 & 48 TANKS	1
8.2	S102021	SKIRT CLIP 7GA A1011CS-B 3.000 X 4.000 X 3.000 LG W/.688"x1.5" SLOT FOR 42"-60" TANKS	4
9	A10131-300X-NP	NAME PLATE FOR A10131-300X A1011CS-B	1
10	64-784-H	LIFT LUG 0.500 A36 3.25 X 8.71 FOR 36-72" TANKS	2
11	S101972	LIFT LUG 0.500 SA105 3.000 X 4.875 PHOENIX 2-900-LUG (6800#) SMALL SERIES	2



**SHELL CUT SIZE IS REFERENCE ONLY
 **CPLG & FITTING 0.50 EXT PROJ TYP
 **HEAD THICKNESS SHOWN IS SPECIFIED MINIMUM
 **RADIUS INSIDE PROJECTED EDGES OF NOZZLES 1/8" MIN
 **SEE PAGE 2 FOR FINISH
 **FLANGE BOLT HOLES STRADDLE TANK C/L EXCEPT AS NOTED
 **ALL DIMS IN INCHES UNLESS NOTED OTHERWISE
 **IMPACT TEST EXEMPT PER UG 20(f) & UCS-66
 **MANWAY CRN: OH7098.5C
 **FITTING CRN: OH0693.9C
 **RADIOGRAPHY: RT4
 42" X 120" 300# VERTICAL AIR RECEIVER
 NOTES

TRAVELER REQUIRED <input checked="" type="checkbox"/>		FIXTURE REQUIRED <input type="checkbox"/>		IF YES THEN FIXTURE #
RELEASED TO PRODUCTION		TOLERANCES ARE PER EN1370 STEEL FAB STANDARD TOLERANCES UNLESS OTHERWISE SPECIFIED		DESIGN & CALCULATIONS COMPLY WITH ASME CODE SECTION VIII, DIV.1. LATEST EDITION
SALES ORDER#		QTY:		A10131 @ 300 PSI
RELEASE DATE:				
NB/SERIAL#				ENG. APP'L / DATE SAB - 12/8/2009
HEAD THK: .353" MIN C.A.: --- MAT'L SA516-70 EFF 100 %		MATERIAL: SA516-70		QCM. APP'L / DATE JP-1/8/2009
SHELL THK: .375" NOM C.A.: --- MAT'L SA516-70 EFF 85 %				A.I. VERIFICATION / DATE BQ-1/9/2009
NAT'L BD: YES		STAMP " U "		SAMUEL PRESSURE VESSEL GROUP OAKVILLE, ONT LEBANON, VA
VOLUME: 660 APPROX GAL		MAWP 300 PSI AT 400 °F		
SHIPPING WEIGHT: 2045 LBS		MDMT -20 °F AT 300 PSI		
CRN: E2202.635		TEST: HYDRO AT 390 PSI		DATE: 11/14/2012
		TEST: PNEU AT --- PSI		PAGE 11

